

DIGI EX15

SECURE ENTERPRISE-READY CELLULAR EXTENDER

Branch connectivity in a compact, affordable, all-in-one solution

Digi EX15 LTE cellular extenders offer gigabit Ethernet with cellular primary or failover connectivity. This compact solution is ideal for retailers and other organizations that cannot tolerate network downtime and the negative impact on revenue streams and brand reputation caused by outages.

The EX15 is available with a 5GE capable LTE-Advanced Pro Cat 18 Digi CORE® plug-in LTE modem to allow businesses to leverage the network that best fits their needs.

Combine the Digi EX15 with a dedicated wireline connection to ensure dual ISP connectivity, maximum uptime and complete business continuity for devices that must be “always on”.

For use in mobile kiosks, digital signs or POS systems, Digi EX15 provides great flexibility in hard-to reach spaces. Additionally, the serial port can be used to provide out-of-band management for other equipment.

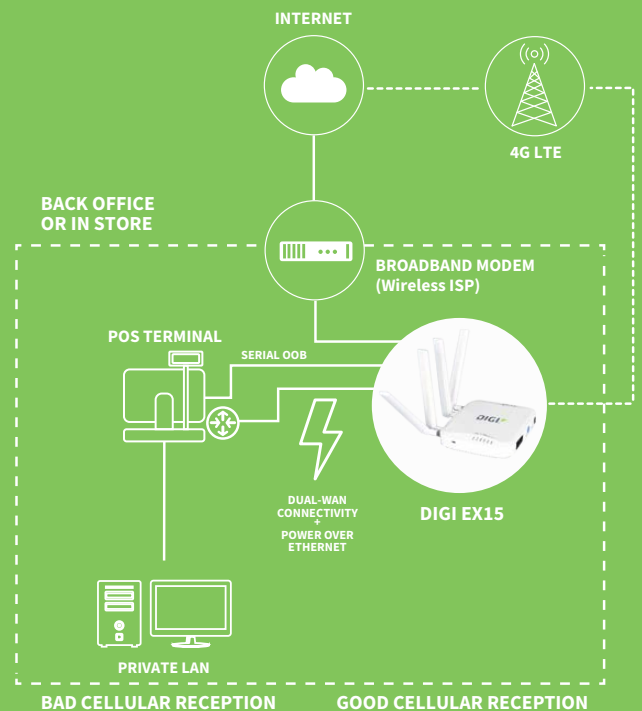
AT&T® device management applications provide easy setup, configuration and support. The AT&T Reporting and Management Tool (ARMT) offers secure, web-based device management for network visibility and control over your AT&T enterprise routers and gateways after deployment.

A battery pack is included for easy site surveys, and the PoE injector and mounting accessories allow for placement where signal strength is optimal.

FEATURES AND BENEFITS

- LTE-certified 5GE capable Digi CORE plug-in modem
- LTE-Advanced Pro Cat 18
- Scalable cellular technology allows you to match bandwidth to applications and future proof your network
- Battery pack for site surveys to identify best placement position based on signal strength
- Mounting accessories included
- Serial port for remote, out-of-band management
- Securely deploy, monitor and control devices with the AT&T Reporting and Management Tool (ARMT)
- Zero-touch provisioning and centralized management

APPLICATION EXAMPLE



SPECIFICATIONS

DIGI® EX15

CELLULAR CONNECTIVITY

DIGI CORE® PLUG-IN LTE MODEM

LTE-A Pro Cat 18 (GLB): LTE FDD: B1, B2, B3, B4, B5, B7, B8, B12, B13, B14, B17, B18, B19, B20, B25, B26, B28, B29, B30, B32, B66, B71; LTE TDD: B38, B40, B41, B42, B43, B46, B48; 3G: B1, B2, B4, B5, B8, B19; Transfer rate (max): 1.2 Gbps, 150 Mbps up

CONNECTORS

(2) 50 Ω SMA (center pin: female)

SIM SLOTS

(2) Mini-SIM (2FF); software selectable and hardware switchable

SOFTWARE AND MANAGEMENT

REMOTE MANAGEMENT

AT&T Reporting and Management Tool (ARMT); SNMP v1/v2c/v3 (user installed/managed)

LOCAL MANAGEMENT

RIP, RIPng, OSPFv2, OSPFv3, BGP, Babel, IS-IS

MANAGEMENT/ TROUBLESHOOTING TOOLS

FTP client, SCP; protocol analyzer with PCAP for Wireshark; event logging with Syslog and SMTP client; NTP/SNTP

MEMORY

256 MB RAM, 512 MB flash

ETHERNET

PORTS

(2) RJ-45; 10/100/1000 Mbps (auto-sensing)

SERIAL

PORTS

(1) RS-232 (RJ-45)

PHYSICAL

DIMENSIONS (L x W x H)

142 mm x 128 mm x 31 mm (5.6 in x 5.0 in x 1.2 in)

WEIGHT

0.2 kg (7.0 oz)

STATUS LEDs

LAN (link = solid, flashing = act), WAN (link = solid, flashing = act), LTE, 5 signal, SIM 1 and 2 LEDs

ENCLOSURE

Plastic

POWER REQUIREMENTS

POWER INPUT

18 VDC 1 A

OTHER

Remote mounting kit: temporary battery, passive PoE injector, mounting bracket and accessories

ENVIRONMENTAL

OPERATING TEMPERATURE

0° C to 40° C (32° F to 104° F)

RELATIVE HUMIDITY

5% to 95% (non-condensing)

APPROVALS

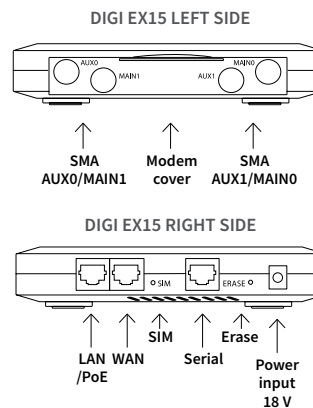
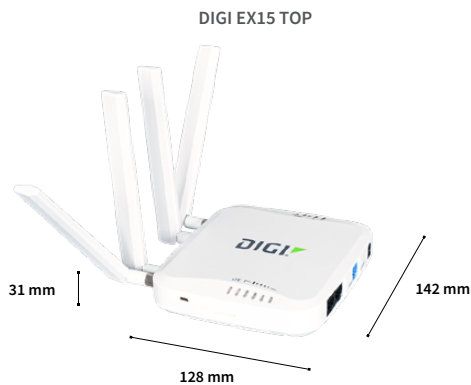
CELLULAR

PTCRB; US: AT&T, Verizon, Canada; Europe

EMISSIONS / IMMUNITY

FCC Part 15, Subpart B, Class A; CE, RCM; CAN ICES-3(B)/NMB-3(B)

PRODUCT IMAGES



DIGI CORE® PLUG-IN LTE MODEM

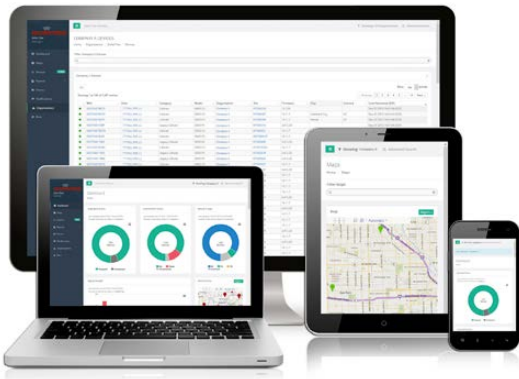
Digi CORE® plug-in LTE modems allows customers to utilize the cellular connection that best meets their speed, budget, fallback-network and geographic requirements.

The modular design and nature of Digi CORE plug-in modems helps mitigate technological obsolescence by allowing customers to upgrade to newer LTE standards without replacing their router. A tamper-proof optional locking mechanism is also included for additional security.

Digi CORE plug-in LTE modems are a best-in-class solution that can future-proof network infrastructure thanks to the modular nature, combined with the stateful firewall and VPN capabilities of Digi routers and infrastructure devices.



THE AT&T REPORTING AND MANAGEMENT TOOL (ARMT)



INFRASTRUCTURE

- Hosted in a commercial-grade SAS 70-certified environment
- Superior availability, operating to 99.9% or greater
- Open APIs available to support application development

CAPABILITIES

- Centralized management, monitoring and configuration over any internet connection, cellular or wired
- Define standard configurations and automatically monitor individual devices for PCI security compliance
- Get alerts and create reports on performance statistics, including connection history, signal quality, latency, data usage and packet loss
- No servers or applications to operate and maintain
- Perform tasks across your entire device network in minutes
- Edit configurations and update firmware for individual devices or groups
- Monitor the status and location of remote devices via a web browser
- Activate or deactivate cellular lines and monitor data to ensure you never incur overage charges

SECURITY

- Certified SSAE-16 facilities
- Over 175 security controls in place to protect your data
- Enables compliance with security frameworks like PCI, HIPAA, NIST
- Earned SkyHigh's Cloud Trust Program highest rating of Enterprise-Ready

© 1996-2020 Digi International Inc. All rights reserved.
All trademarks are the property of their respective owners.

